



CHEWELAH SCHOOL DISTRICT NO. 36
STEVENS COUNTY, WASHINGTON

NOTICE OF SPECIAL MEETING

NOTICE is hereby given that the Board of Directors of Chewelah School District No. 36, Stevens County, Washington will hold a Special Meeting on September 21, 2022, at 6:00 PM at the District Office at 210 N. Park St. The meeting is called for the purpose of considering and acting upon the following agenda items:

1. Call meeting to order
2. Flag salute
3. Modifications to the agenda
4. Approval of the agenda
5. Present Director Districts Redistricting Proposed Plan and receive public comment about the plan
6. Adjourn

CHEWELAH SCHOOL DISTRICT NO. 36
STEVENS COUNTY, WASHINGTON

/s/ Jason Perrins

Secretary to the Board of Directors

Persons with disabilities who would like to request assistance, services, or accommodations to attend school district functions are asked to call 509-685-6800, extension 1002.

Chewelah School District #36, 210 N. Park Street, P.O. Box 47, Chewelah, Washington 99109, www.chewelah.k12.wa.us

Telephone: (509) 685-6800 ext. 1001, FAX (509) 935-8605, E-mail: jperrins@chewelahk12.us



MEMORANDUM

DATE: September 14, 2022

TO: Chewelah School District Community

FROM: Superintendent Perrins

RE: Director districts redistricting following 2020 US Census

Following receipt of U.S. Census population data, school board director district boundaries are reviewed in accordance with RCW 29A.76.010 to ensure board districts are as equal in population as possible, contiguous, compact, do not favor any groups/parties, and protect Areas of Common Interest.

Samamish Data Systems reviewed Chewelah School District director district boundaries using 2020 U.S. Census data and created the draft redistricting plan with the following considerations:

- Minimal change approach of growing or shrinking districts based primarily on the change to population. Population of District 1 was high, and District 3 was low. Used existing district simple lines with minor adjustments. Achieved a nice population deviation.
- Streamline and improve compactness of the districts. Made District 2 more compact with borders that are easier to use and describe. Used Washington Avenue and South Fork Chewelah Creek Road.. District 3 now crosses Park St. at Webster and King to 5th St. S with a jog onto 4th St. S.

Next steps:

- Amend the draft as necessary after receiving public comment and resubmit any amended draft plan for additional written public comment at least one week before adopting the plan
- Adopt the plan and submit to Stevens County Auditor

Plan Documents:

- District Summary Report
- District Summary of Population by Race and Hispanic Origin
- Map 1 – Proposed Board Districts close up with current district boundaries in bold green
- Map 2 – Proposed Board Districts close up
- Map 3 – Proposed Board Districts entire district
- Map 4 – Proposed Board District 1
- Map 5 – Proposed Board District 2
- Map 6 – Proposed Board District 3

12/17/2021

**Chewelah School District
District Summary Report**

Director District Number	Ideal Population	Total Population	Deviation from Ideal	% Deviation from Ideal	White Population	Hispanic Origin (of any race)	Non White & Mixed
1st	1,999	2,001	2	0.10	1,801	70	200
2nd	1,999	1,993	-6	-0.30	1,807	48	186
3rd	1,999	2,004	5	0.25	1,766	84	238
Totals.....		<u>5,998</u>	<u>1</u>		<u>5,374</u>	<u>202</u>	<u>624</u>

12/17/2021

Chewelah School District
Summary of Population by Race and Hispanic Origin

District Number	Total Population	Total Population by Race							Two or More Races	Hispanic Origin (of any race)
		Single Race								
		Total	White	Black African American	American Indian and Alaska Native	Asian	Native Hawaiian and Other Pacific Islander	Other Race	Total	
1st	2,001	1,877	1,801	8	23	9	4	32	124	70
2nd	1,993	1,864	1,807	2	27	10	2	16	129	48
3rd	2,004	1,853	1,766	2	31	11	5	38	151	84
Totals.....	<u>5,998</u>	<u>5,594</u>	<u>5,374</u>	<u>12</u>	<u>81</u>	<u>30</u>	<u>11</u>	<u>86</u>	<u>404</u>	<u>202</u>

Chewelah School District -
Proposed Board Districts
as Approximated Using
Census 2020 Geography

- 1st District
- 2nd District
- 3rd District

City Limits

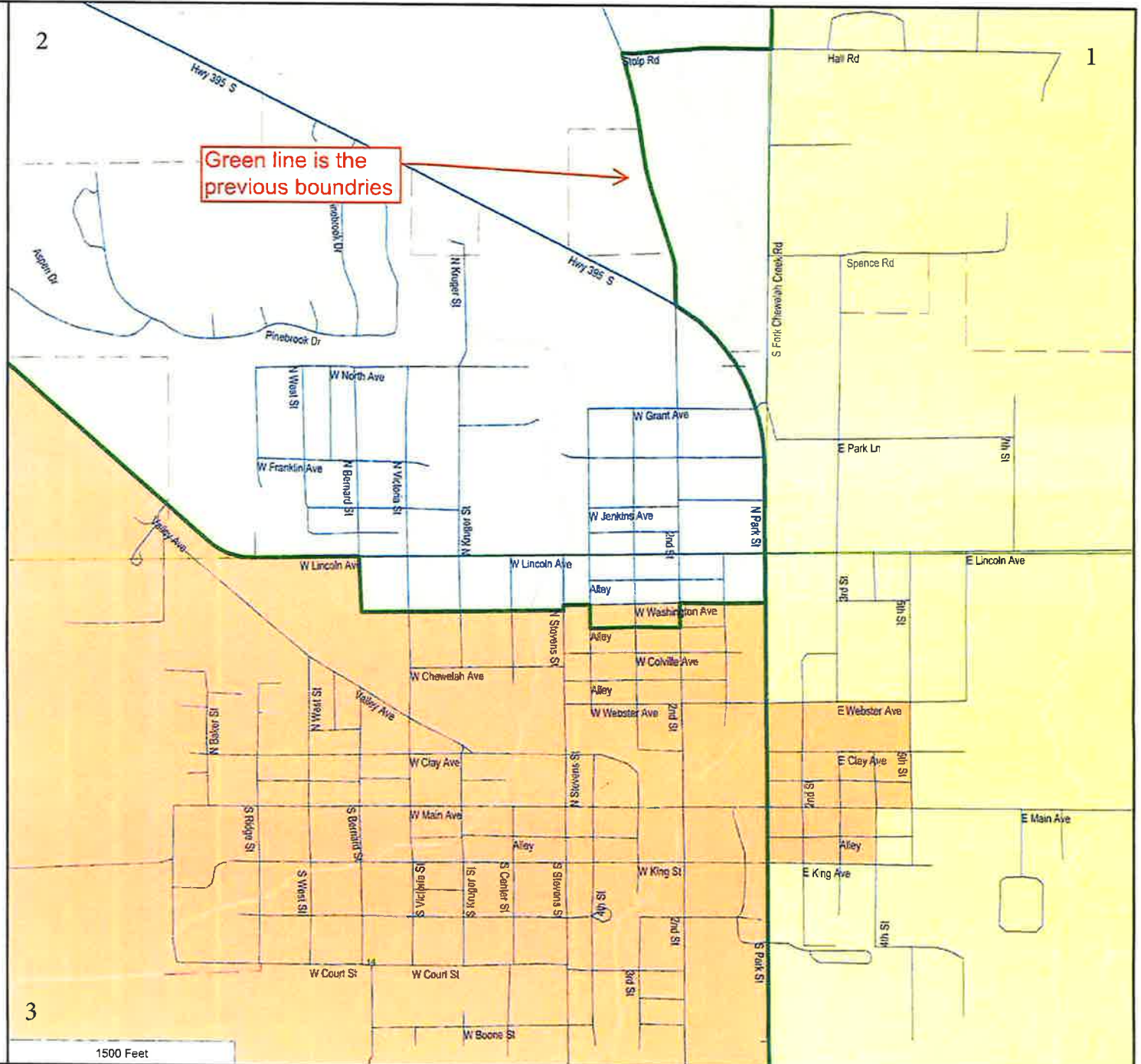
Previous
Director
Districts

District
Outline

Sectional
Centers

Townships

MAP 1



**Chewelah School District -
Proposed Board Districts
as Approximated Using
Census 2020 Geography**

- 1st District
- 2nd District
- 3rd District

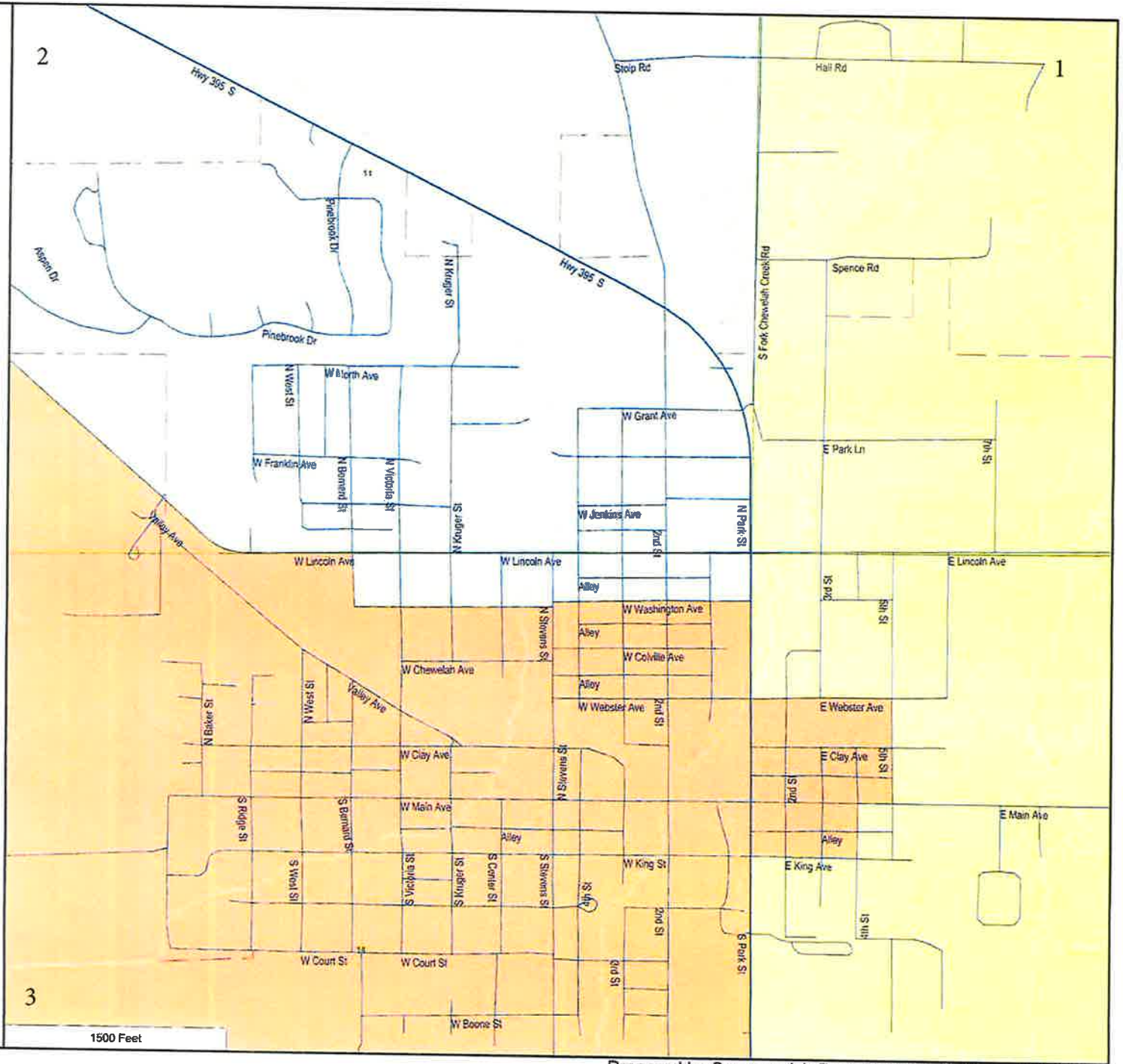
City Limits

District
Outline

Sectional
Centers

Townships

MAP 2



Chewelah School District - Proposed Board Districts as
Approximated Using Census 2020 Geography

1st District

2nd District

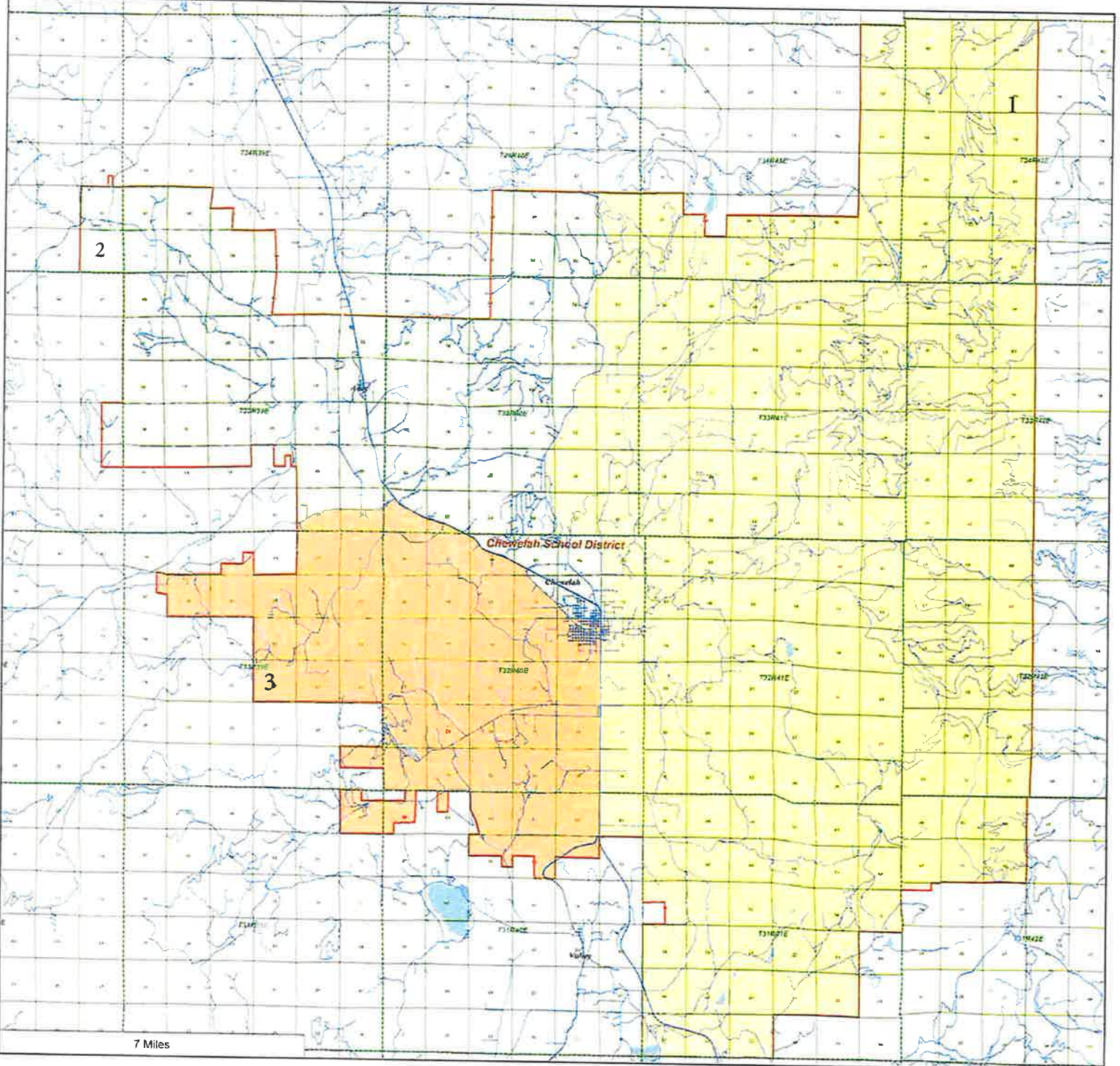
3rd District

City Limits

District Outline

Sectional Centers

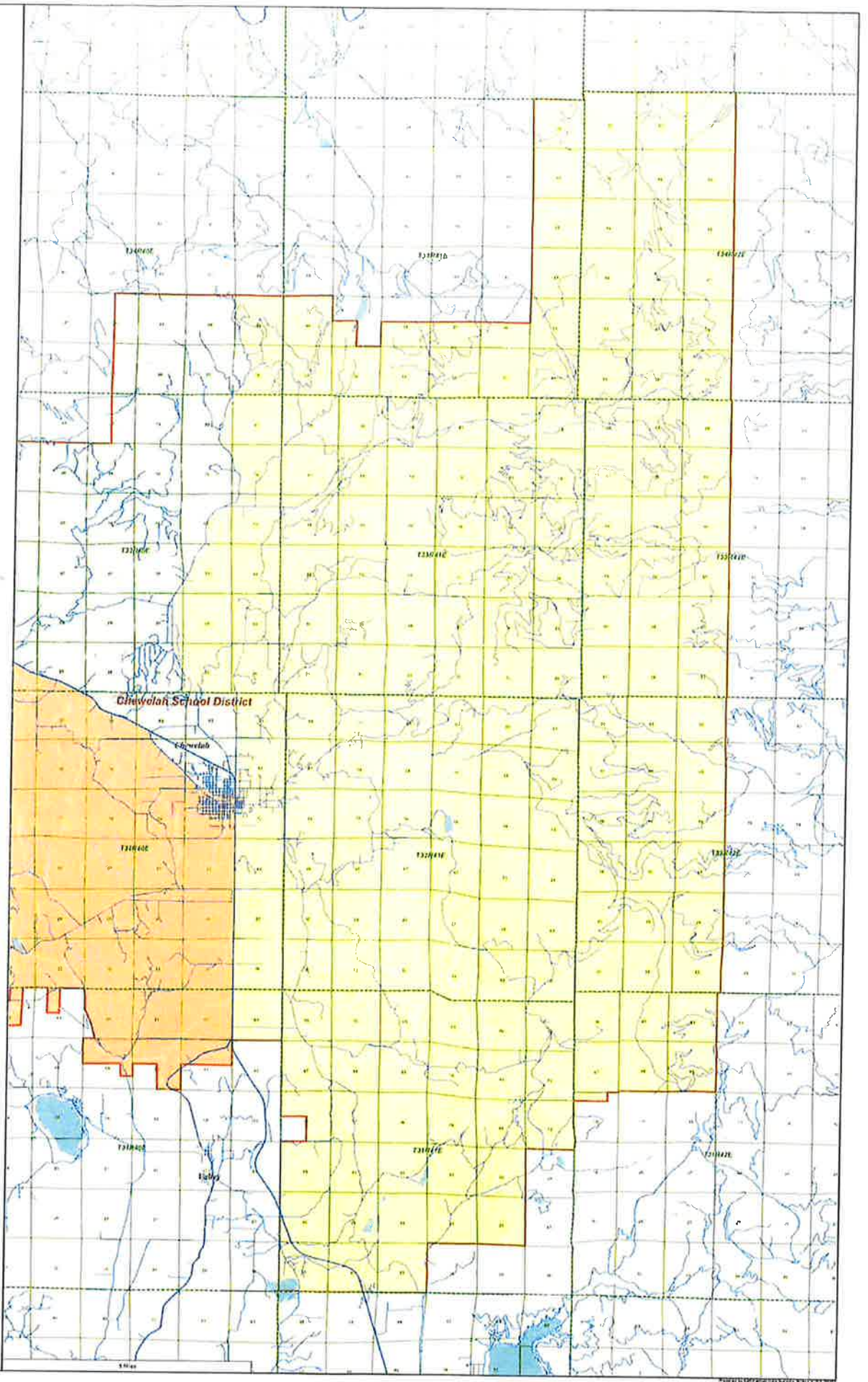
Townships



MAP 3

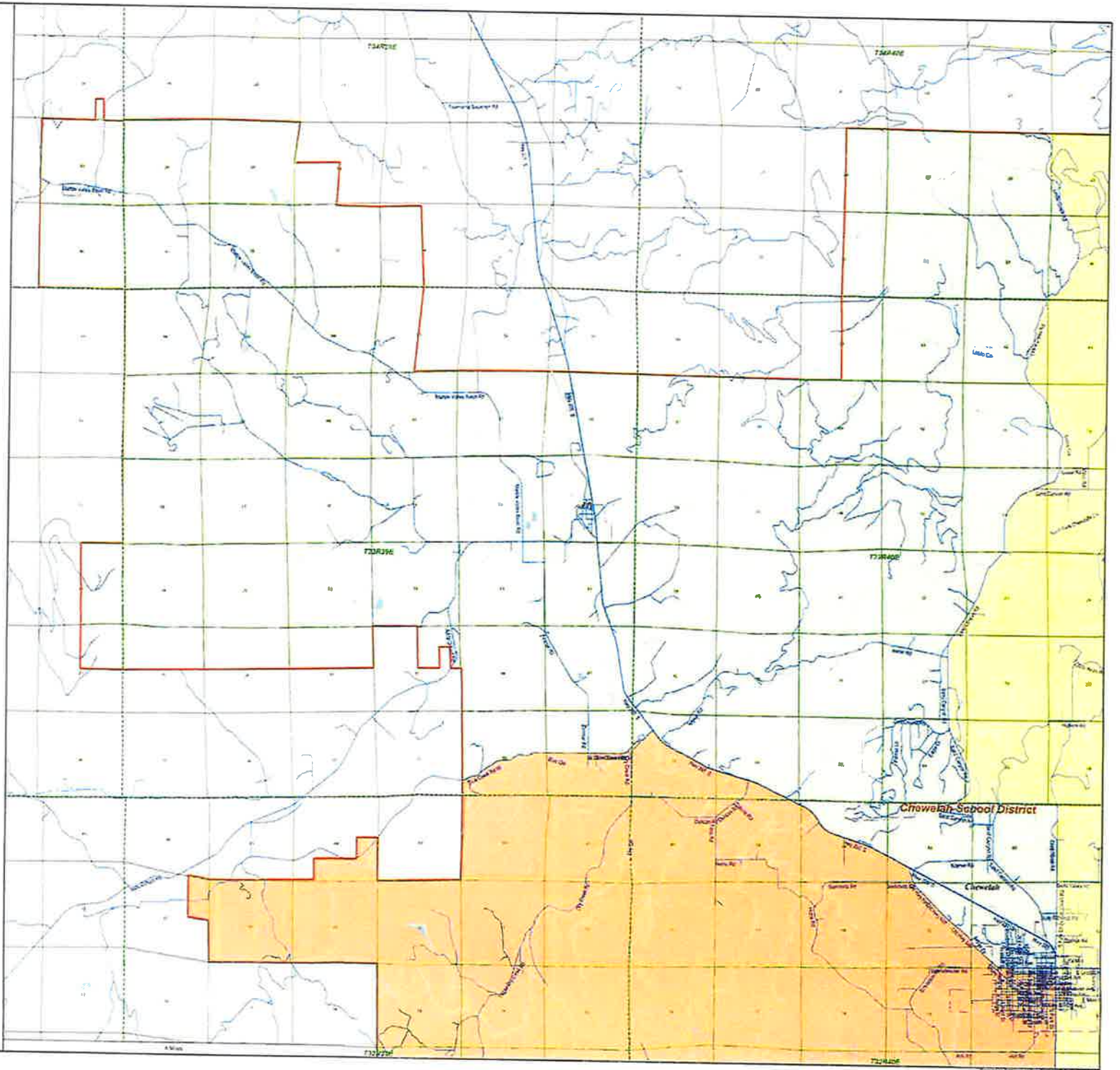
7 Miles

PROPOSED DIST 1



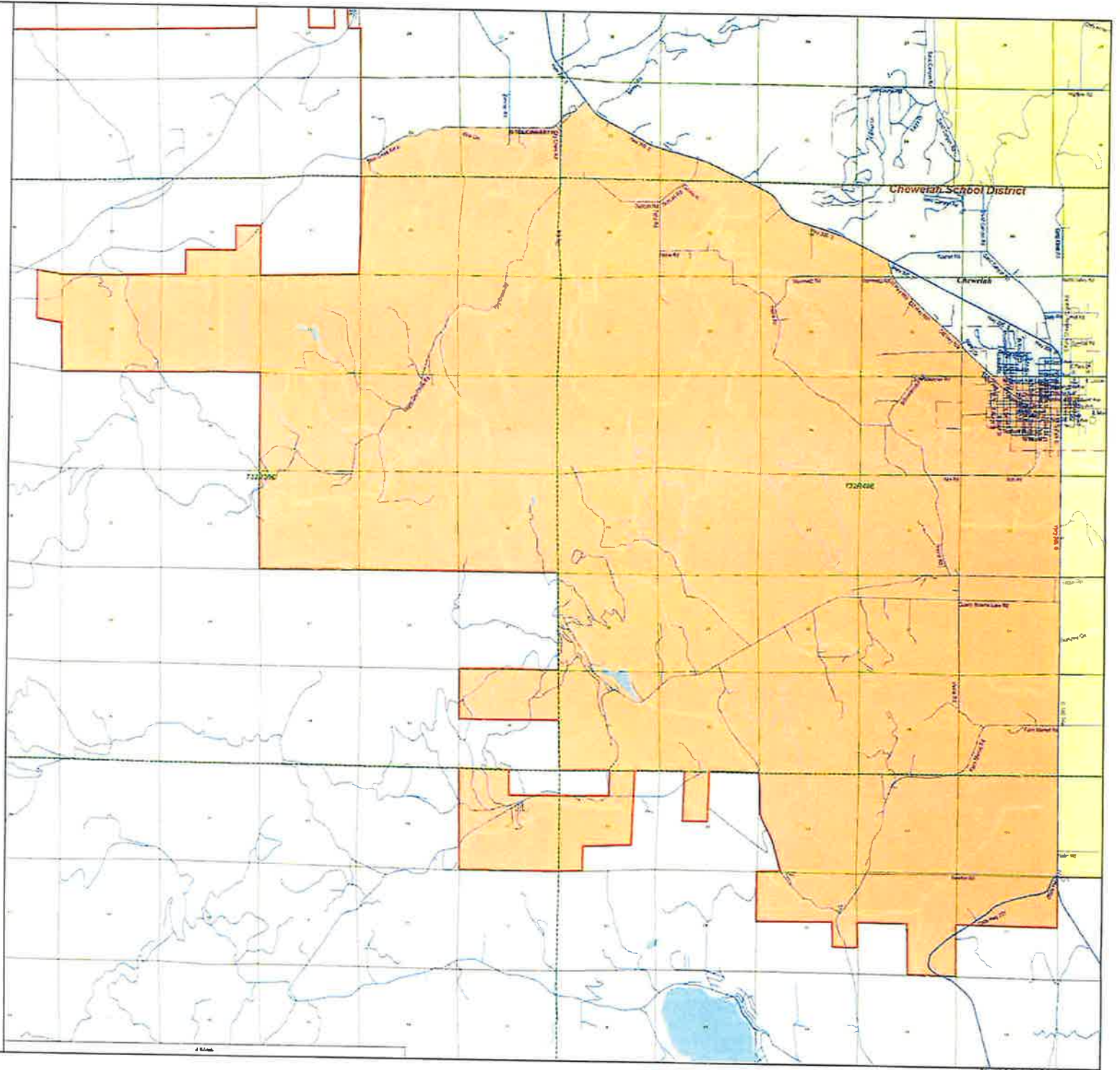
MAP 4

PROPOSED DISTRICT 2



MAP 5

PROPOSED DISTRICT 3



MAP 6

Sammamish Data Systems Inc.

PO Box 70382

Bellevue, WA 98007-0382

Telephone (425)867-1485

Fax (425)861-0184

E-mail: sales@sammdata.com

**Chewelah School District
Legal Description – February 7, 2022**

Director District 1

Starting at the intersection of Hwy 395 and S Park St.
North on S Park St to E King Ave.
East on E King Ave to 4th St.
North on 4th St to E Main Ave.
East on E Main Ave to 5th St.
North on 5th St to E Webster Ave.
West on E Webster Ave to N Park St.
North on N Park St to Cozy Nook Rd.
Easterly and northerly on Cozy Nook Rd to the northern boundary of Section 02, Township 32, Range 40E.
West on said section line to Sand Canyon Rd.
Meandering northerly on Sand Canyon Rd to Leslie Creek Rd.
Meandering northerly on Leslie Creek Rd to the school district boundary.
Clockwise on the school district boundary to the southern crossing of Hwy 395.
North on Hwy 395 to the point of the beginning.

Director District 2

Starting at the intersection of Leslie Creek Rd and Sand Canyon Rd.
Southerly on Sand Canyon Rd to the southern boundary of Section 34, Township 33, Range 40E.
East on said section to Cozy Nook Rd.
Southerly on Cozy Nook Rd to N Park St.
South on N Park St to W Washington Ave.
West on W Washington Ave to N Bernard St.
North on N Bernard St to W Lincoln Ave.
Westerly on W Lincoln Ave to Old Hwy NW.
Northwest on Old Hwy NW to Hwy 395 S.
Northwesterly on Hwy 395 S to W Blue Creek Rd.
Southwest and westerly on W Blue Creek Rd to the school district boundary.
Clockwise on the school district boundary to the northern crossing of Leslie Creek Rd.
Southerly on Leslie Creek Rd to the point of the beginning.

Director District 3

Starting at the intersection of Hwy 395 and S Park St.

North on S Park St to E King Ave.

East on E King Ave to 4th St.

North on 4th St to E Main Ave.

East on E Main Ave to 5th St.

North on 5th St to E Webster Ave.

West on E Webster Ave to N Park St.

North on N Park St to W Washington Ave.

West on W Washington Ave to N Bernard St.

North on N Bernard St to W Lincoln Ave.

Westerly on W Lincoln Ave to Old Hwy NW.

Northwest on Old Hwy NW to Hwy 395 S.

Northwesterly on Hwy 395 S to W Blue Creek Rd.

Southwest and westerly on W Blue Creek Rd to the school district boundary.

Counter-clockwise on the school district boundary to the southern crossing of Hwy 395.

North on Hwy 395 to the point of the beginning.

Director District 4

At Large

Director District 5

At Large